

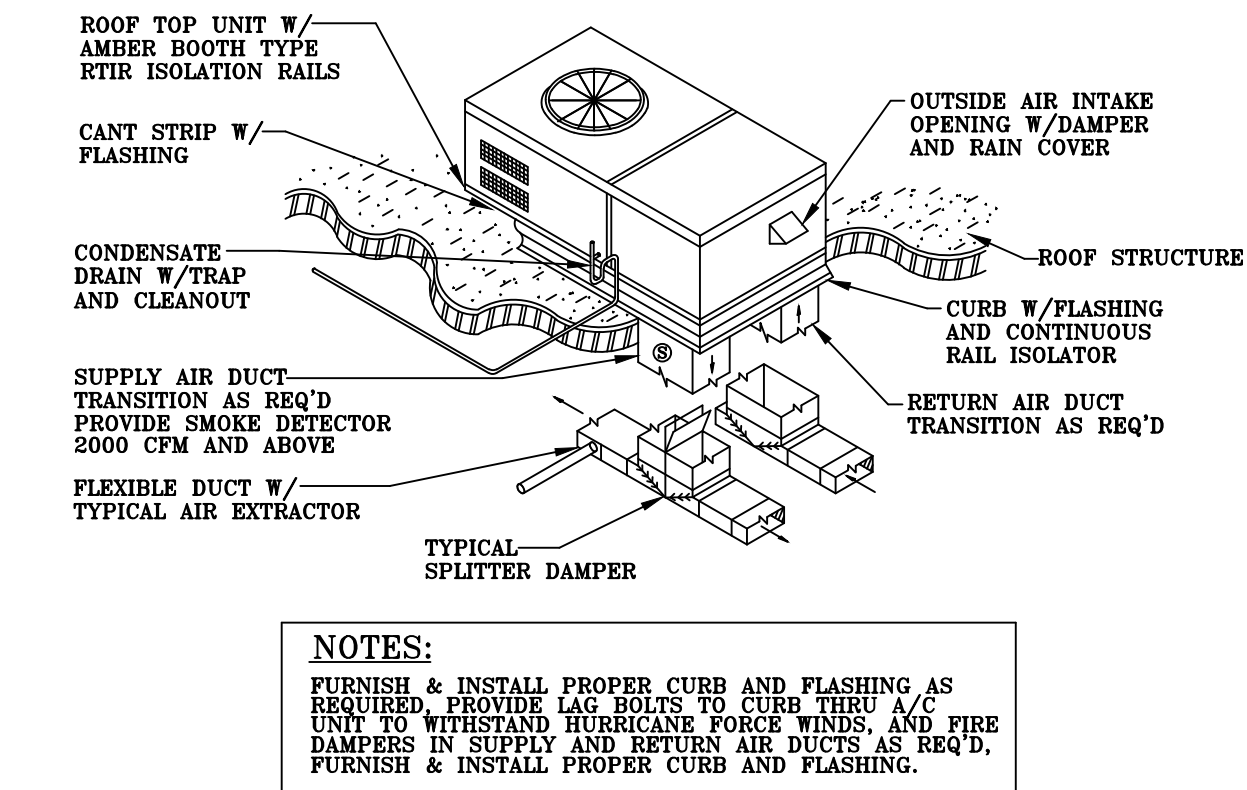
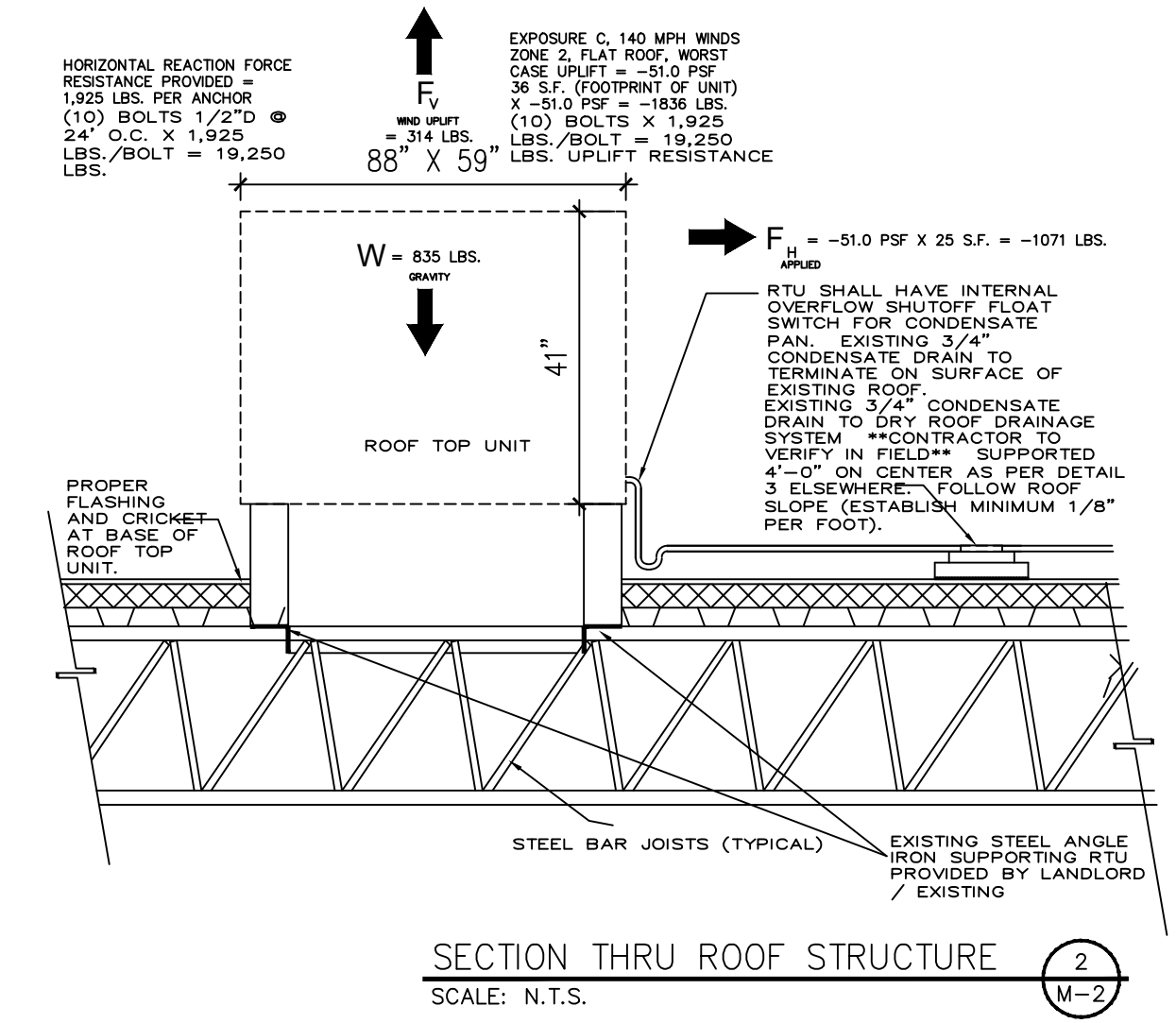
NEW EXHAUST FAN EQUIPMENT SCHEDULE	
PZ25-12000048	EF-1
05/20/2026	
MANUFACTURER	BROAN
MODEL	AE50110DC
MOUNTING	CEILING
AREA SERVED	BATHROOMS
CONDITION OF SERVICE	
CFM	50, 80, 110
STATIC PRESSURE (W.G.)	0.1
RPM (MAX)	883
TIP SPEED (MAX)	—
DRIVE	
DIRECT	X
V-BELT	
FAN MOTOR	
AMPS	1.2
VOLTS	120
PHASE	1
CYCLE	60
MOTOR SPEEDS	SINGLE
TYPE OF MOTOR	CENTRIFUGAL
SPECIAL FEATURES	
BIRD SCREEN (MATERIAL)	ALUMINUM
OPTION GAGE	—
GAGE	—
MAT. (AL) (FIBR. GL) (OTHER)	STEEL
SPECIAL COATING	NO
BUILT IN DISCONNECT	YES
NOTE	BCKDRFT DAMP

NEW 4.0-TON TRANE PKG AC

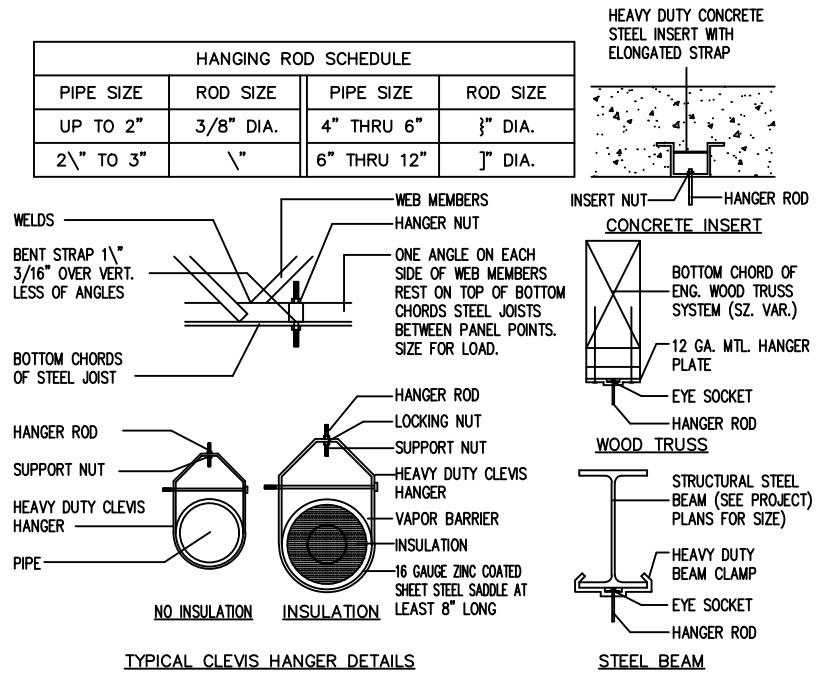
UNIT DESIGNATION	WAREHOUSE RTU
AREA SERVED	WAREHOUSE
MANUFACTURER	TRANE
PACKAGE MODEL #	EDK048A3EOA
TOTAL CAP BTUH	49,500
SENSIBLE CAP BTUH	34,650
COIL ENTERING COND	80/67
AMBIENT AIR TEMP	95°
TON	4.0
CU KW-BREAKER	35/35
AHU HEATER KW-BREAKER	10.0-50/50
CONDENSING UNIT RLA	13.21
VOLTAGE FOR SYSTEM	3-60-208/230
CFM	1,600
PACKAGE UNIT LOCATION	ROOF CURB
SEER2/EER2	13.4/10.6
CU DIMENSIONS (WxHxL)	3.99' x 3.55' x 6.4'
CU WEIGHT (LBS)	725

NEW 1.0-TON MITSUBISHI HEAT PUMP

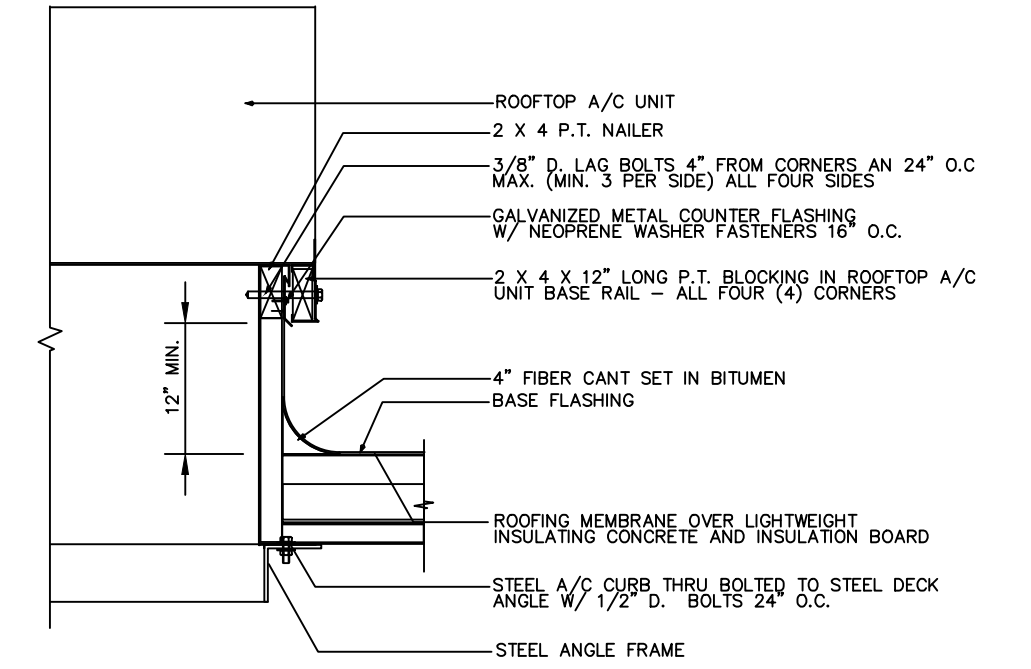
UNIT DESIGNATION	OFFICE AC
AREA SERVED	SEE PLANS
MANUFACTURER	MITSUBISHI
WALL HUNG AHU MODEL #	MSZ-HX12NL
CU MODEL #	MUZ-HX12NL
CU BREAKER	15/15
TOTAL CAP BTUH	12,000
SENSIBLE CAP BTUH	8,400
COIL ENTERING COND	80/67
AMBIENT AIR TEMP	95°
TON	1.0
HEAT PUMP BTUH/HSPF	12,200/10.0
CONDENSING UNIT RLA	6.6
VOLTAGE FOR SYSTEM	1-60-208/230
CFM	400
FAN COIL UNIT LOCATION	INTERNAL
COND UNIT LOCATION	EXTERNAL
REFRIGERANT LINES SIZES	OUTSIDE
SUCTION (INCH)	3/8"
LIQUID (INCH)	1/4"
SEER2/EER2	20.0/12.5



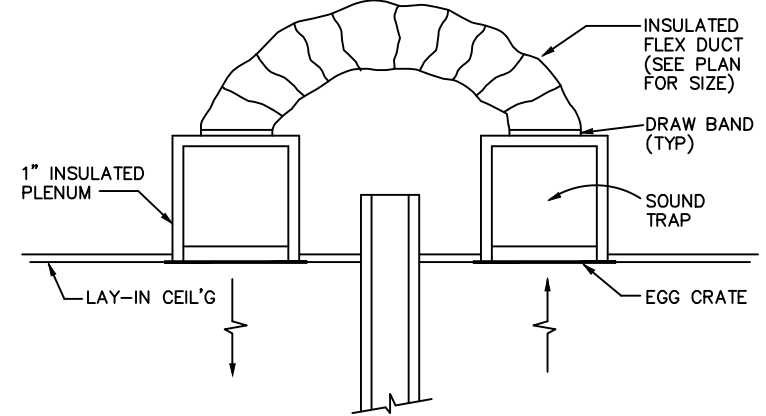
REPLACEMENT ROOF TOP UNIT
SCALE: N.T.C.



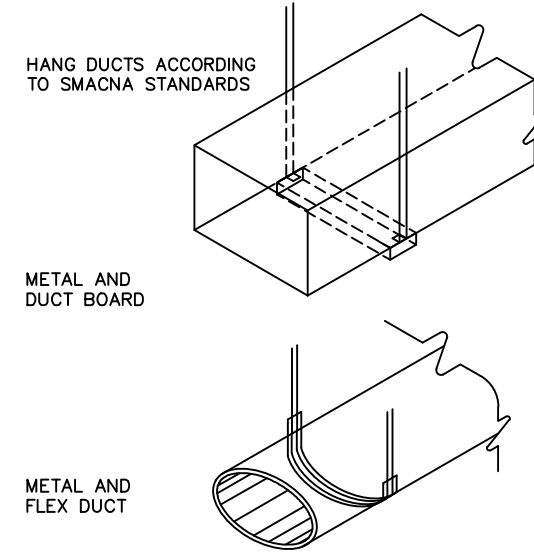
TYPICAL PIPE SUPPORTS
SCALE: N.T.S.



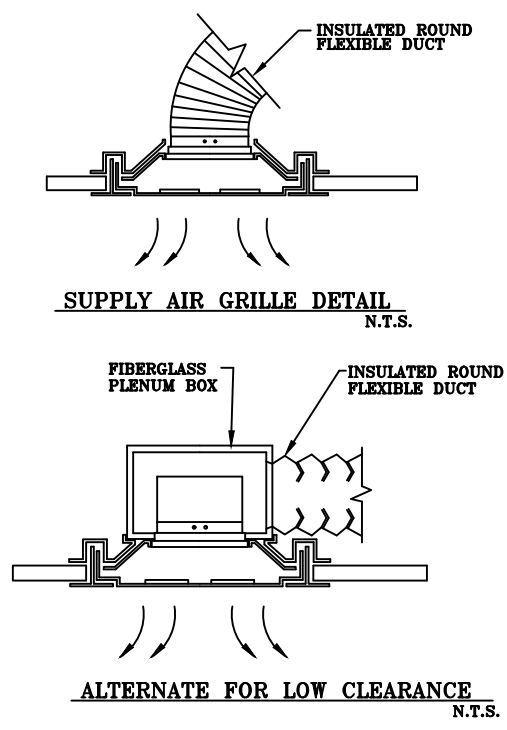
ROOF CURB DETAIL
SCALE: NOT TO SCALE



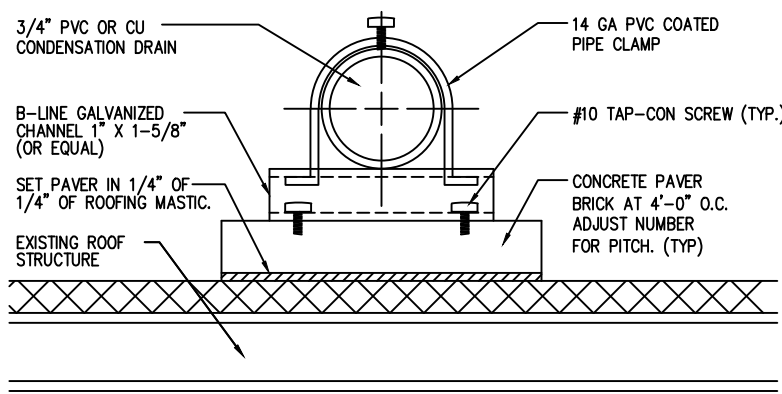
RETURN AIR TRANSFER
SCALE: N.T.S.



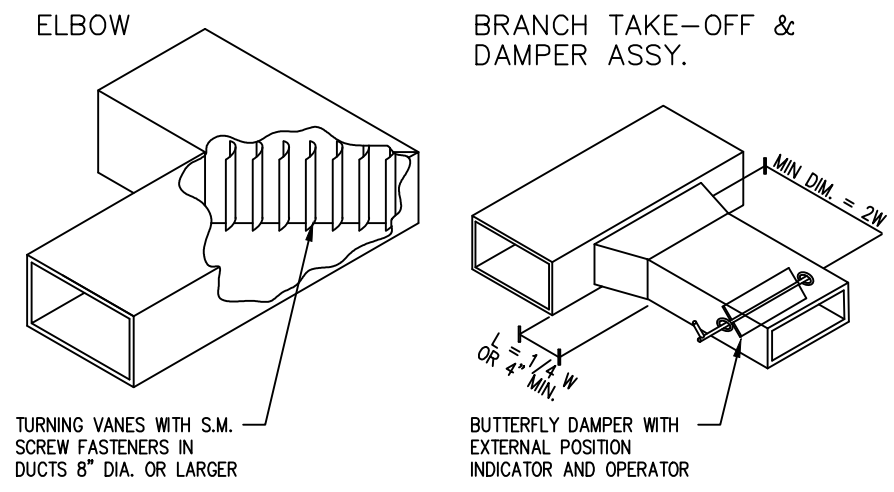
DIFFUSER RUN OUT DETAIL
SCALE: N.T.S.



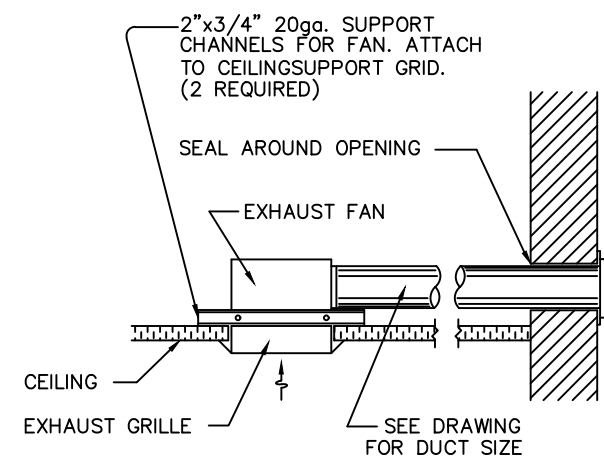
GRILLE INSTALLATION DETAIL
SCALE: N.T.S.



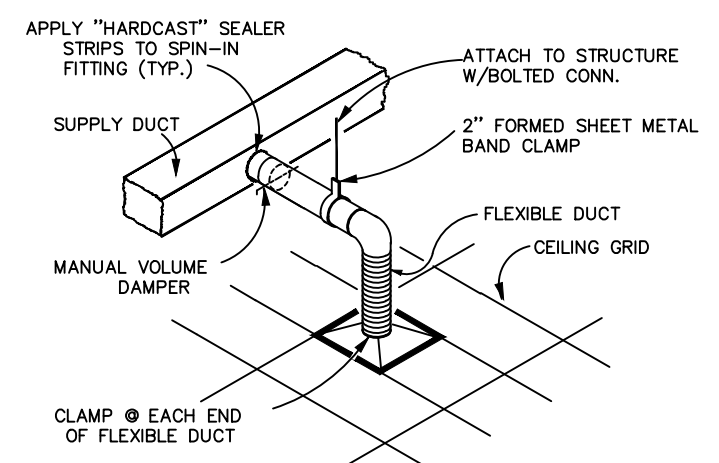
CONDENSATE LINE SUPPORT DETAIL
SCALE: NOT TO SCALE



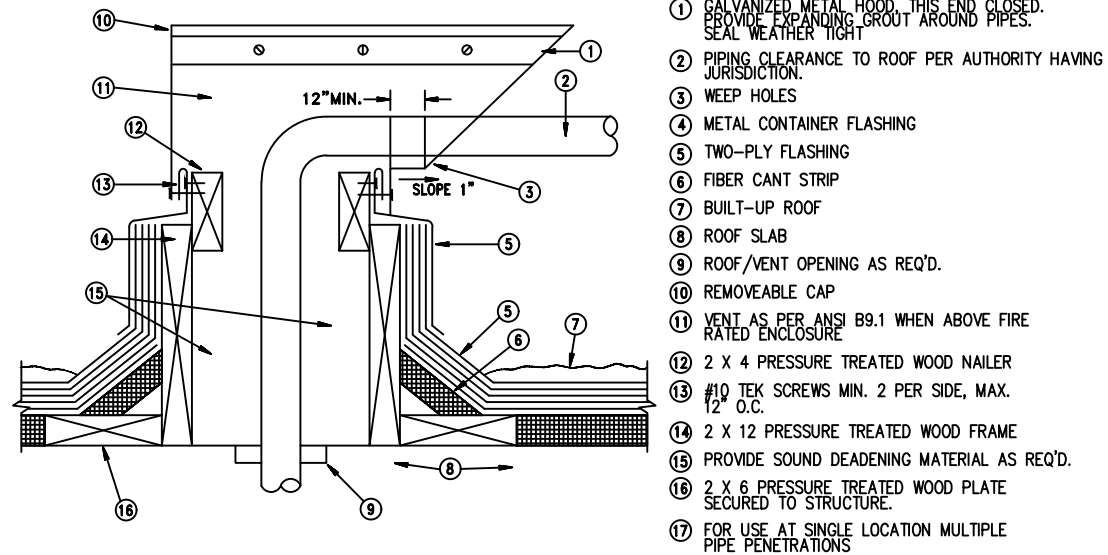
TYPICAL DUCT DETAIL
SCALE: N.T.S.



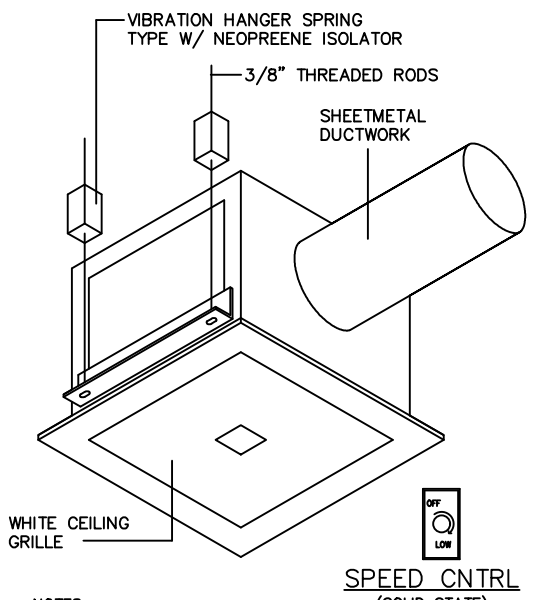
EXHAUST FAN DETAIL
SCALE: N.T.S.



DIFFUSER RUN OUT DETAIL
SCALE: N.T.S.



ROOF PIPE PENETRATION
SCALE: N.T.S.



CABINET CEILING FAN
SCALE: N.T.S.

Through Penetrants – One metallic pipe, conduit, tubing or flexible metal pipe installed concentrically or eccentrically within opening. Annular space between penetrant and periphery of opening to be min 0 in. (0 mm point contact) to max 2 in. (51 mm). Penetrant to be rigidly supported on both sides of wall. The following types and sizes of penetrants may be used'.

Fill, Void or Cavity Material* – Caulk or Sealant – Min 5/8 in. (16 mm) thickness of caulk applied within annulus, flush with both surfaces of wall or roof. Min 1/4 in. (6 mm) diam bead of caulk applied to gypsum board/penetrate interface at point contact location on both sides of wall or roof. (15WB+, CP 25WB+ caulk or FB-3000 WT sealant*Bearing the UL Classification Mark. This Material was extracted and drawn by 3M Fire Protection Products from the 2008 edition of the UL Fire Resistance Directory.)

REVISIONS

BY

MIKAH J. ABBOTT

STATE OF FLORIDA

PE# 98054

1859 S. DIXIE HWY

POMPAÑO BEACH, FL 33060

(205) 300-3582

MECHANICAL PLANS FOR:

1150 SW 30TH AVE.

POMPAÑO BEACH, FL 33069

EVERYTHING ENERGY INC.

1859 S. DIXIE HWY.

POMPAÑO BEACH, FLORIDA

EMAIL: autocad587@hotmail.com

energycalc61@hotmail.com

PHONE: (561) 334-3170

(954) 776-2003

Drawn By:

J.J.

Checked By:

M.J.A.

MIKAH ABBOTT

1859 S. DIXIE HWY

POMPAÑO BEACH FL

PHONE: 561-334-3170

EMAIL: autocad587@hotmail.com

DATE:

10-15-25

SCALE:

1/4"

PROJECT:

1150 SW 30TH AVE.